

DATASHEET

CC1600 HVDC Small Cell Converter

Advanced Technology to Simplify Your Network



The CC1600SC54HV Outdoor High Voltage DC convection cooled converter is designed to efficiently transform energy from available outdoor HVDC sources into the 48 Volt Nominal DC power needed for small cell radios. The CC1600 provides 1600W output to power small cell radios while offering a feature set that simplifies installation combined with zero maintenance. Off the shelf IP65 quick connection solutions for inputs and outputs for ease of installation while providing touch safe, waterproof connectivity.

Power for Easy Installations

The CC1600 HVDC Converter was developed to maximize power for small cell radios while offering a feature set that simplifies installation.

- Three DC output connections share the total available power to allow one to three connection solutions.
- IP65 quick connection solutions for inputs and outputs for ease of installation while providing touch safe, waterproof connectivity.
- Robust performance with HVDC in – DC out simplicity.
- Integrated heat sink with included mounting holes provide solid connection points.
- Flexible installation in pedestal, cabinet, vault, wall, pole, shroud, or platform mounting locations.
- Available Pole Mount and Solar Shield Options for any environment.

Features & Advantages

- Outdoor rated convection cooled converter
- Externally connectorized input/output connections
- Flexibly provides 1600 Watts of -48 Volt power
- Full power operating temperature range for outdoor (-40°C through +46°C).
- Starts and runs at HVDC +/-190VDC
- Fail safe performance – soft start and inrush current protection prevent nuisance tripping of upstream breakers, electronic controlled short-circuit protection on the output
- Flexible Output – DC output terminals provide shared output for three loads, or full output for a single load

Electrical Specifications for System Design

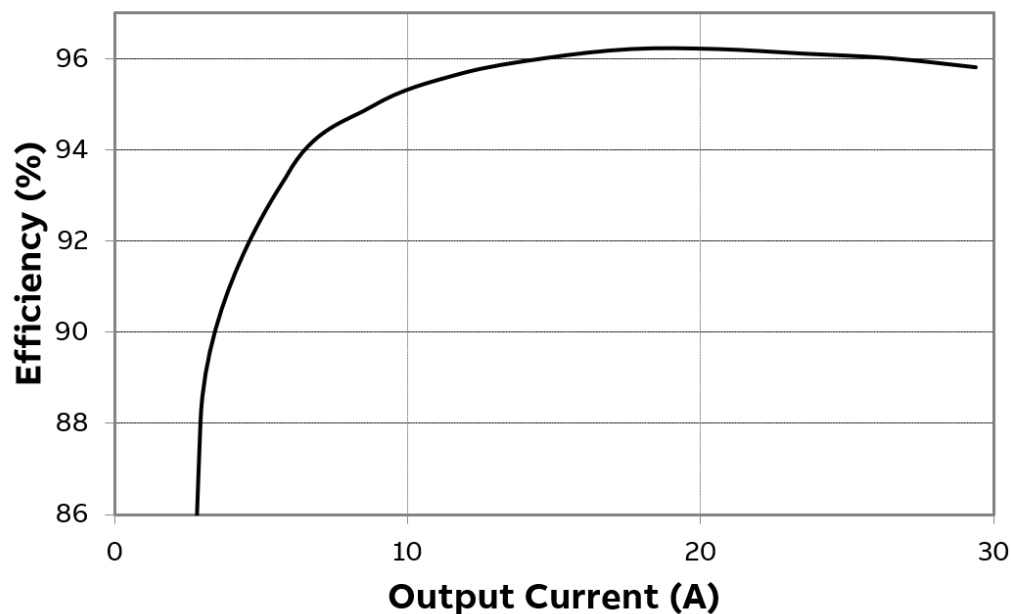
OmniOn's CC1600-SC55 Outdoor converter is designed to efficiently transform energy from available outdoor HVDC sources into the 48 Volt Nominal DC power needed for small cell radios.

Input	MIN	TYPICAL	MAX
Voltage Range			
• VDC Input	190V	380V	400V
Frequency	DC	DC	DC
DC input @ 54.5Vout	6.0A	3.9A	3.6A
DC input Peak	6.9A	4.6A	4.4A

Mechanical	
Height (in./mm)	17 / 432
Width (in./mm)	9.5 / 241
Depth (in./mm)	4.4 / 112
Weight (Lb/Kg)	20.75 / 9.4

Environmental	
Operating Temperature	-40°C to +46°C (-40°F to 115°F) Output derates 2%/C beginning at +46°C up to +55°C
Storage Temperature	-40°C to +85°C (-40°F to 185°F)
Relative Humidity	0 - 100%
Protection Class	GR487 Wind Driven Rain, IP65
Altitude	4800 feet

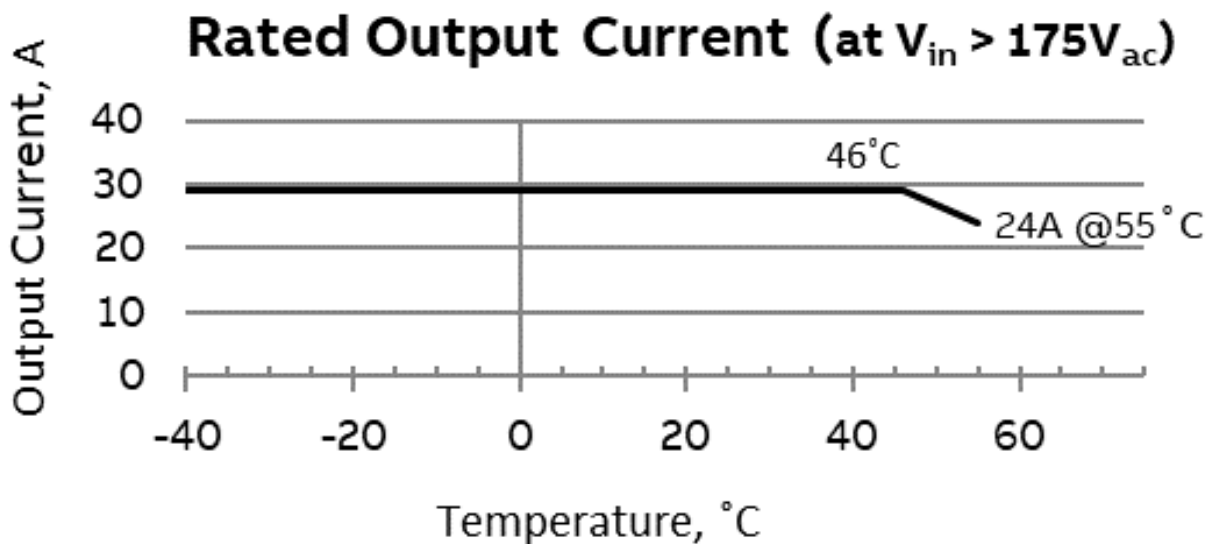
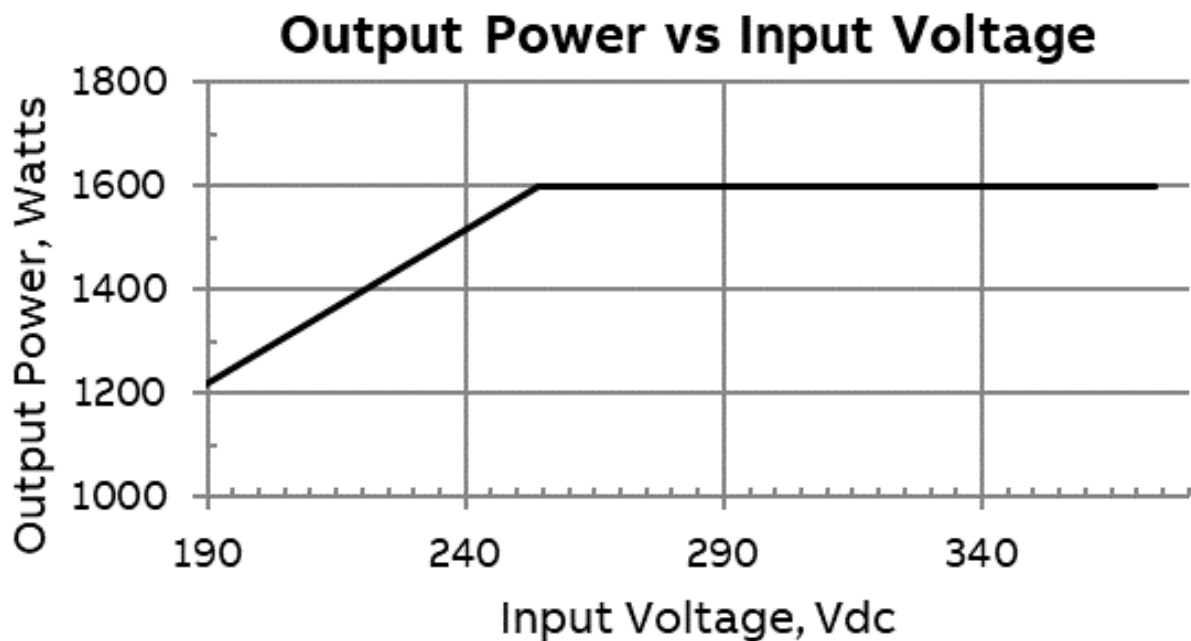
CC1600SC54HV Efficiency vs Output Current
(Temp: 25C, Vin: 380Vdc)



Electrical Specifications (continued)

Output

V_{out}	42–58 V _{DC} range. Default = 54.5Vdc±1%
I_{out}	22A @ Low line input; 33A @ High line input Up to 26A to any individual output; 33A maximum total output
Regulation	±0.5% ; 2% over life load and temperature
Ripple	100 mV _{rms} , 250 mV _{p-p}
Efficiency	96.2% Peak


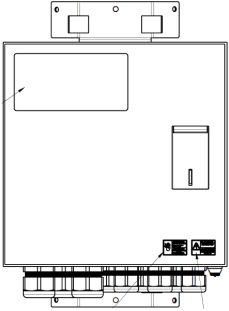


Specifications (continued)

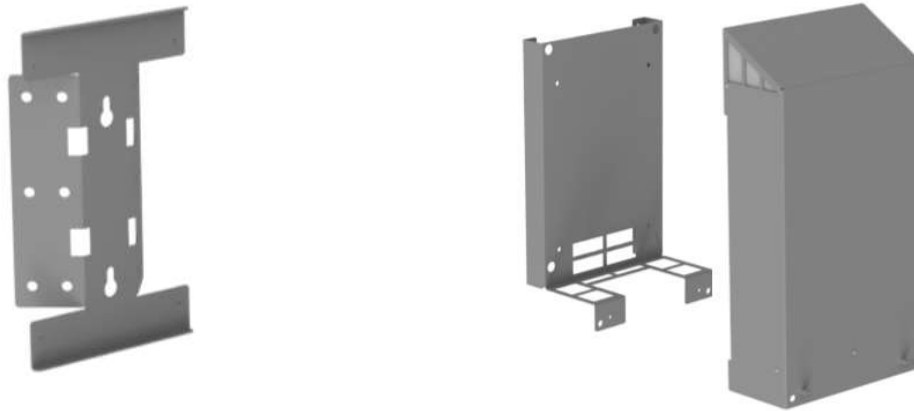
Agency Certifications	
EMC Performance	FCC Part 15, EN 55032 (CISPR32), EN 55035, Level A, GR-1089
Safety	ANSI/UL60950-1-2014, EN60950-1 2nd ed+A1+A2, CAN/CSA C22.2 No. 60950-1- 07 +Am2: 2014, NEBS GR-1089, GR-63-CORE, CE, RoHS6/6, GR-3108 Class 4
Lightning Surge	EN/IEC 61000-4-5 Level 4 (Error free), ANSI C62.41 Category B 100 kHz ring and 1.2/50µs combination waves (6kV damage free); ITU-T K.45, Telcordia GR-1089

Drawings

CC1600 Ordering Information

Ordering Code	Description	Picture
1600301680A	CC1600SC54HV Small Cell Converter	
1600269170A	SC Dist-DIN-01 Pole Mount Distribution Accepts inputs from up to 3 x CC1600-SC55 Converters Supports 6 Outputs: Each load on breaker 4 x 10A 2 x 30A Cord Grips for each SO Cord	

Mounting and Connection Accessories



Ordering Code	Description	Picture
1600183817A	Pole Mount Bracket	
1600270672A	4.5" Stand-Off Pole Mount Bracket	
1600183819A	Solar Shield Kit	
1600270673A	Open Top Solar Shield	
1600270671A	Three Load Interface Kit	

OmniOn Power Inc.

601 Shiloh Rd.

Plano, TX USA

[omnionpower.com](https://www.omnionpower.com)

We reserve the right to make technical changes or modify the contents of this document without prior notice. OmniOn Power does not accept any responsibility for errors or lack of information in this document and makes no warranty with respect to and assumes no liability as a result of any use of information in this document.

We reserve all rights in this document and in the subject matter and illustrations contained therein. Any reproduction, disclosure to third parties or utilization of its contents – in whole or in parts – is forbidden without prior written consent of OmniOn Power. This document does not convey license to any patent or any intellectual property right. Copyright© 2023 OmniOn Power Inc. All rights reserved.